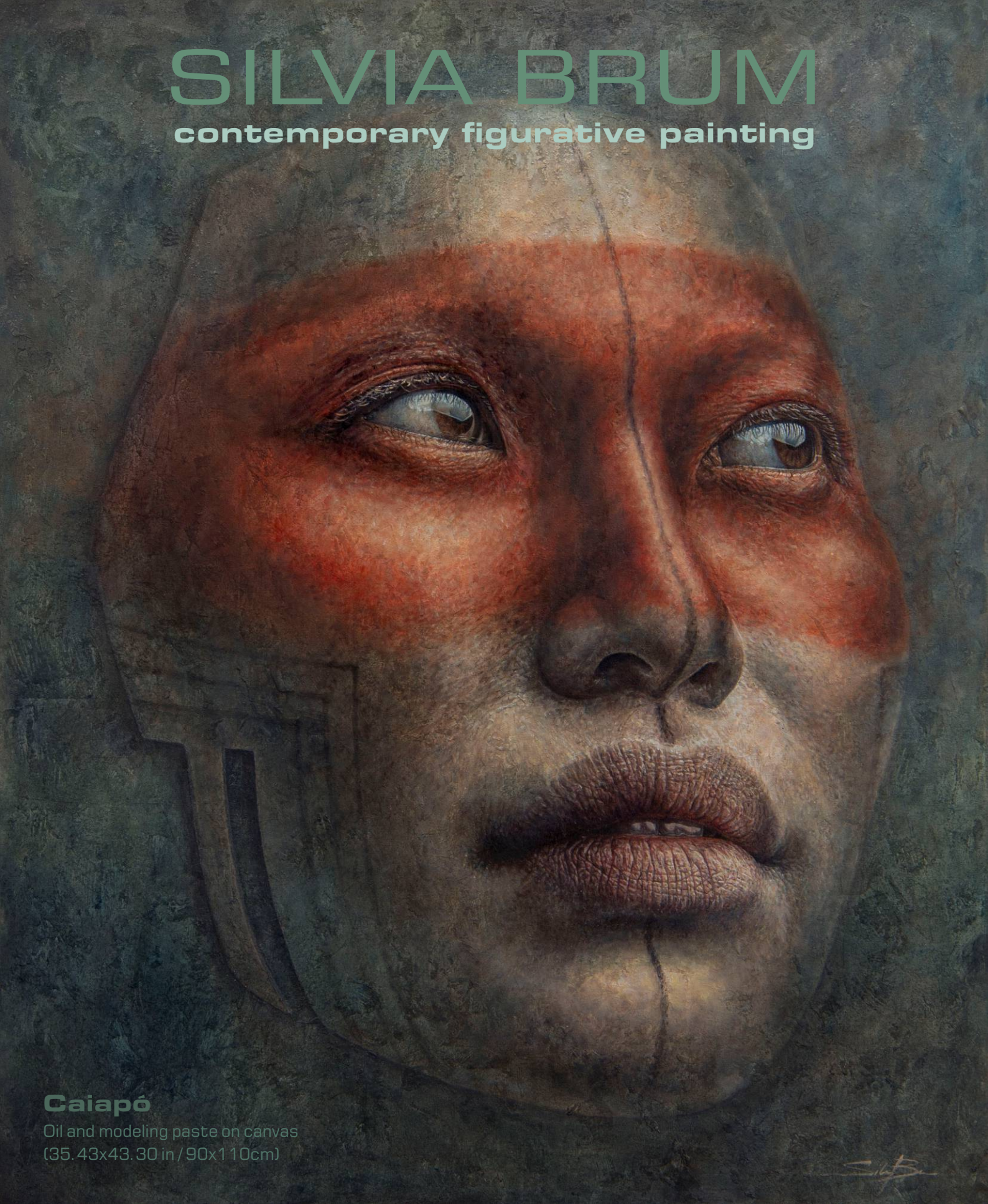


SILVIA BRUM

contemporary figurative painting



Caiapó

Oil and modeling paste on canvas
(35.43x43.30 in / 90x110cm)

S.B.

SILVIA BRUM

was born in Porto Alegre, Brazil, in 1967. Graduated in Architecture, Silvia has been crafting her gift since childhood, and in 1996, **painting** has become her main professional activity. She has presented her work in different exhibitions in **Brazil** and abroad.

She has developed her career painting commissioned portraits, but currently she dedicates herself to original artworks, always having the **woman figure** as the central element. Vivid and expressive eyes are hallmarks of her work, painted in oil on canvas, or also combining other techniques as acrylic paint, crayon and rust on more than one layer of MDF board (three-dimensional painting).

Silvia was one of the INPRNT Traditional Art 25 finalists, in the Beautiful Bizarre Art Prize 2020.





PERSONA/ MIMETISMOS

is a series of paintings where masks represent the female universe, their emotional subjectivities, or even social contexts that guides our times.





Caiapó

Oil and modeling paste on canvas
(43.30 x 35.43 in / 110 x 90cm)
2020

Caiapó (Kayapo), indigenous tribe of the Brazilian Amazon, fighting for the preservation of their home amid deforestation. Although the future looks uncertain, Caiapó India faces it with hope, with the strength and purity characteristic of her people.







Bronze Fragment

Oil and modeling paste on canvas
(43.30 x 35.43 in / 110 x 90cm)
2019

The irreversible is expressed through the broken ceramic on the face of the character who, even glued, will never lose her marks. When looking to the side, not satisfied, she tries to deny her impotence in the face of the real situation





Metamorphosis

Oil and modeling paste on canvas
(43.30 x 35.43 in / 110 x 90cm)
2020

The "Metamorphosis" painting represents our transformation during the quarantine confinement and the desire for a more free and true life. The character looks at the butterfly that has just emerged from the cocoon, as if looking at its own future.



Violet Fragment

Oil and modeling paste on canvas
(43.30 x 35.43 in / 110 x 90cm)
2019

The irreversible is expressed through the broken ceramic on the face of the character who, even glued, will never lose her marks. When looking to the side, not satisfied, she tries to deny her impotence in the face of the real situation.





Cyber Eva

Oil and modeling paste on canvas
(43.30 x 35.43 in / 110 x 90cm)
2019

On "Cyber Eva", I represent a woman with android cutouts and ancestral painting. She looks to the future, but proudly preserves her roots.







La Festa è Finita!

Oil and modeling paste on canvas
(43.30 x 35.43 in / 110 x 90cm)
2020

With the beginning of the pandemic, a new reality suddenly imposed itself before our eyes and we are forced to strip ourselves of certainties, routines and vanities.

The virus exposes weaknesses, indifference and injustice, but it also reminds us of how human we still are.

Let's take off the masks of superficiality ... the Party is over. La Festa è Finita!

(We should just wear the masks that fight Covid-19).





L'Or Noir (Black Gold)

Oil on 2 layers of MDF board (3D painting)
(27.55 x 27.55 in / 70x70cm)
2018

“L'Or Noir” was painted in oil on 2 layers of MDF board. Covered by gold and with her chin up, the beautiful model looks at us proud of her ethnic origins. This painting represents an important humanist reflection of the historical context that has surrounded the African continent in the last four centuries.





Porcelain

Oil, acrylic and cracking technique on
2 layers of MDF board (3D painting)
(27.55 x 27.55 in / 70x70cm)
2018

The irreversible is expressed by the broken porcelain, which, even glued, will never lose its marks. The bandage on the chin represents a fragile repair attempt; when looking to the side, the character tries to deny her impotence.



広島



Hiroshima 広

Oil, acrylic and paper on 2 layers
of MDF board (3D painting)
(39.37 x 39.37 in / 100x100cm)
2018





Cybertribal

Oil, acrylic and paper on 2 layers
of MDF board (3D painting)
(27.55 x 27.55 in / 70x70cm)
2018





Pierrot

Oil, acrylic and paper on 2 layers
of MDF board (3D painting)
(27.55 x 27.55 in / 70x70cm)
2018





LIVE WINDOWS

In this series I present delimited people to the space of their own window. Through this “opening”, we can walk into the world of each character and explore their unique identity.

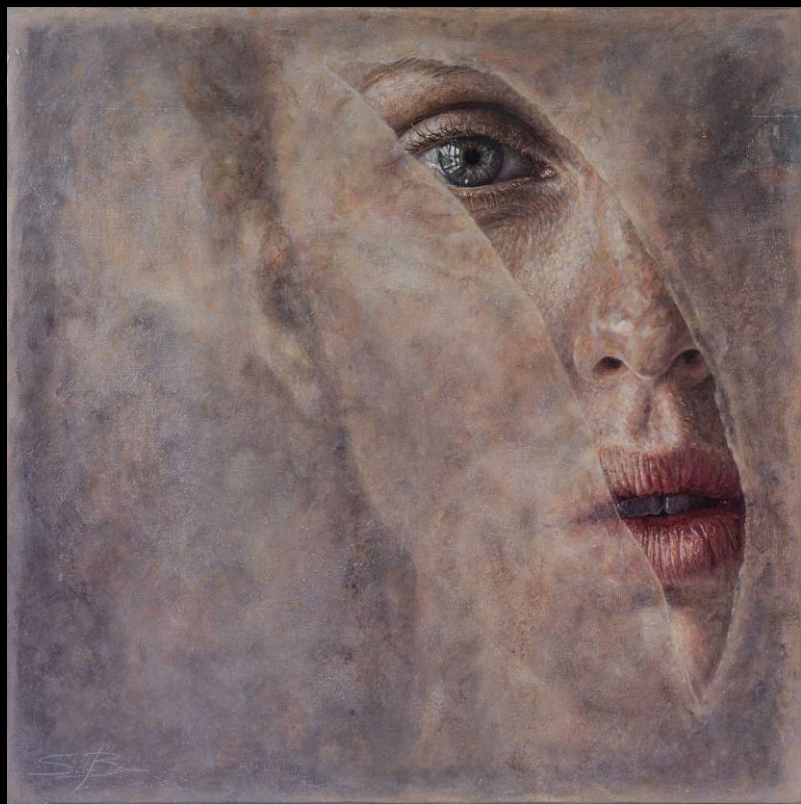




Through the Window

Oil, modeling paste and
soft pastel on canvas
(27.55 x 27.55 in / 70x70cm)
2020

During the pandemic, our view of the world has become rectangular, defined by the opening of our windows. Whether real or digital, they have never been more important; our portal to real life.





Persiana

(Window Blind)

Oil, acrylic, paper
and pastel on panel
(27,55 x 47,24 in /
70x120cm)

2017

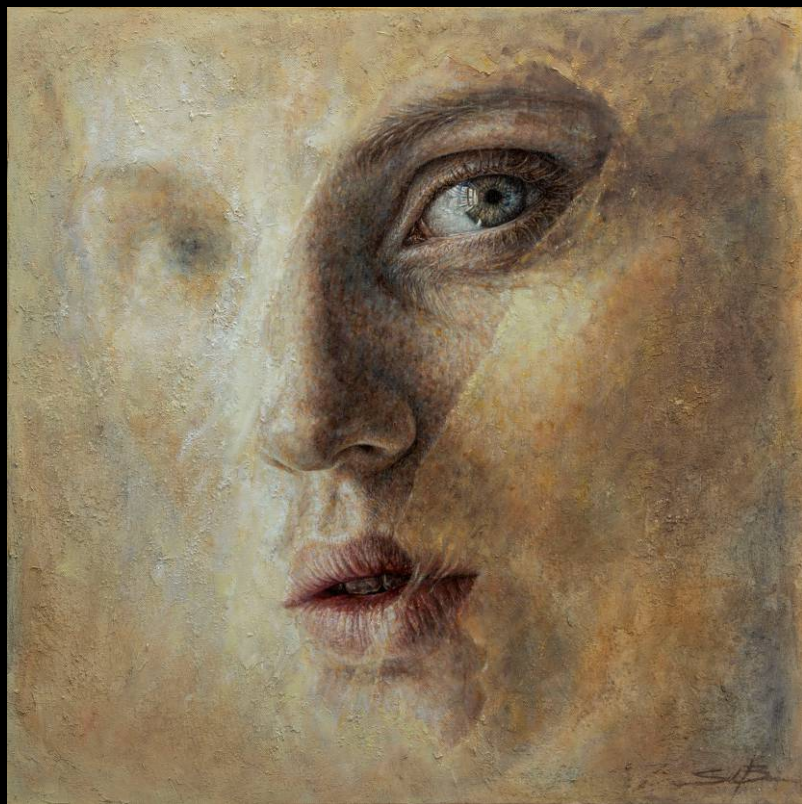




Through the Window 2

Oil, modeling paste and
soft pastel on canvas
(27.55 x 27.55 in / 70x70cm)
2021

During the pandemic, our view of the world has become rectangular, defined by the opening of our windows. Whether real or digital, they have never been more important; our portal to real life.



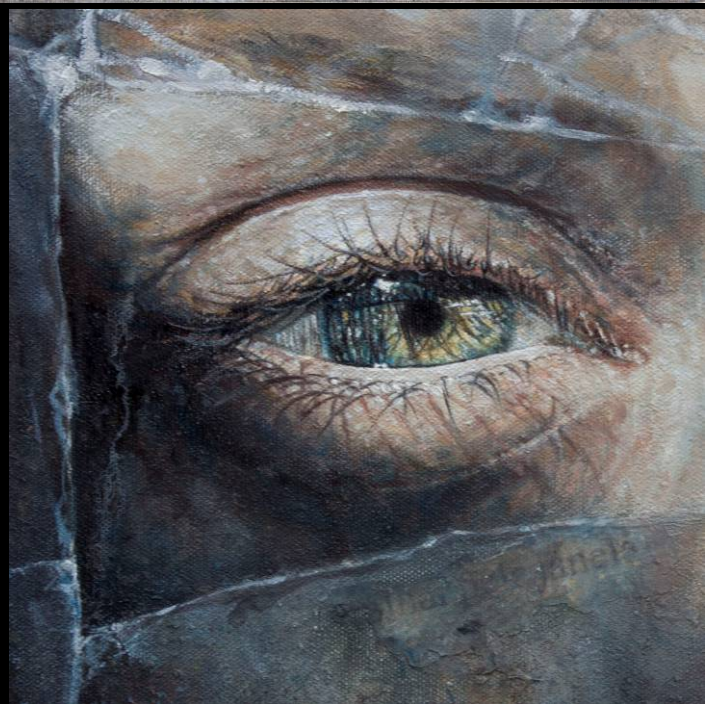


Janela Quebrada

(Broken Window)

Oil, acrylic and paper on panel
(27.55 x 35.43 in / 70x90cm)

2018

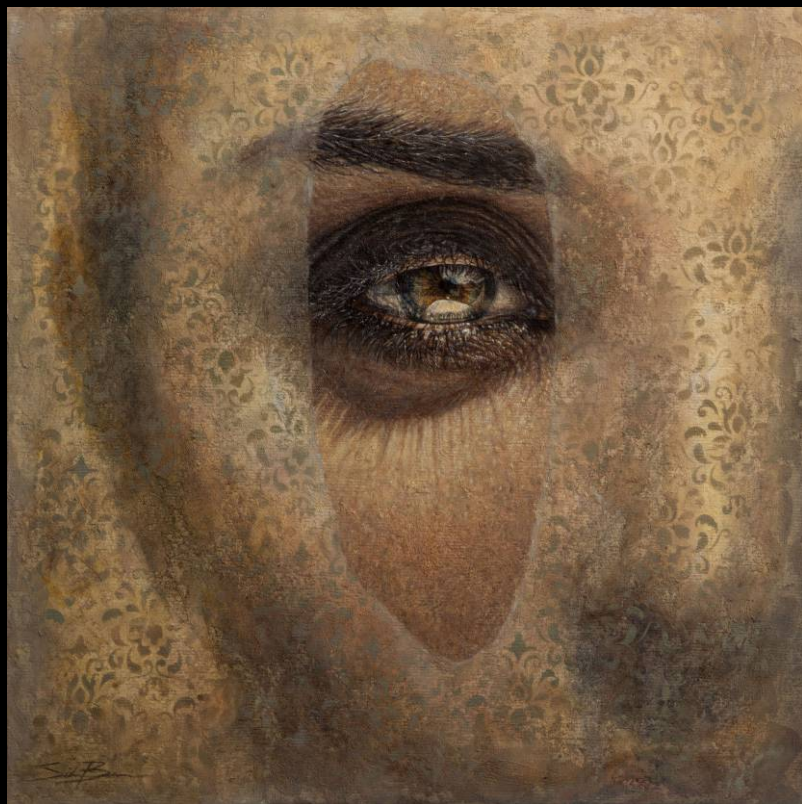




Another Window

Oil and modeling paste on canvas
(23.62 x 23.62 in / 60x60cm)
2020

During the pandemic, our view of the world has become rectangular, defined by the opening of our windows. Whether real or digital, they have never been more important; our portal to real life.





O T H E R
W O R K S





Jade Fragment

Oil on cardboard

(15.94 x 15.94 in / 40,5 x 40,5 cm)

2021

Even under the inexorable passage of time, our foot prints remain contained in fragments, whether these are memories, writings or a look. Fragments are clues to a story, or a puzzle to be pieced together.





CONTACT

silvia@silviabrum.com.br

www.silviabrum.com.br



[silviabrum](https://www.instagram.com/silviabrum)



[silviabrumpintora](https://www.facebook.com/silviabrumpintora)